

MONTHLY MEMBERSHIP PROGRESS REPORT

District 322 B1

Results as of: 5/31/2024

GMT:

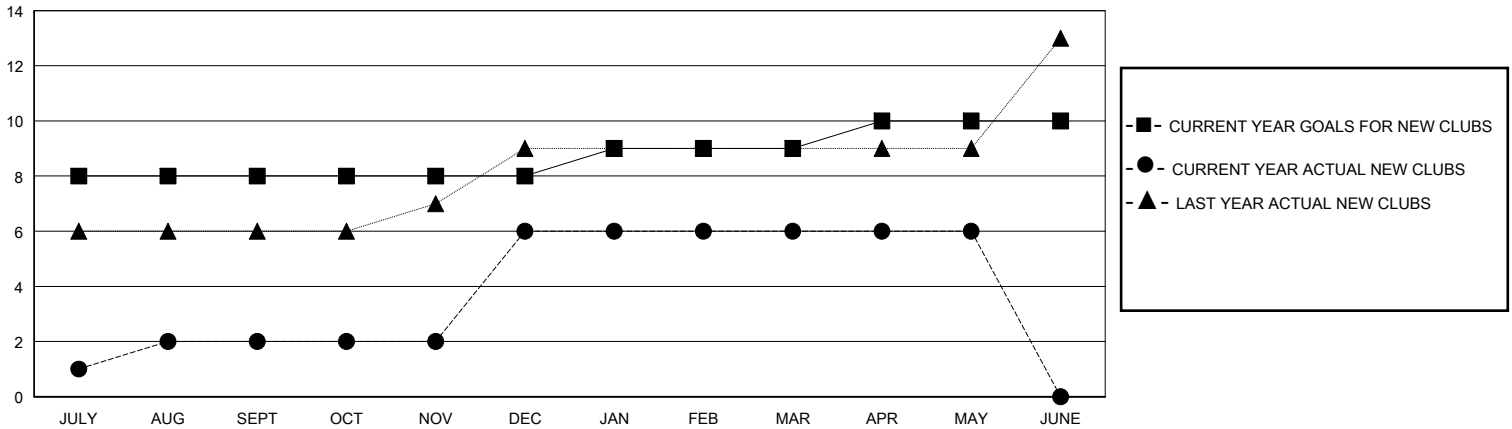
LOCATION INDIA

GMT CA

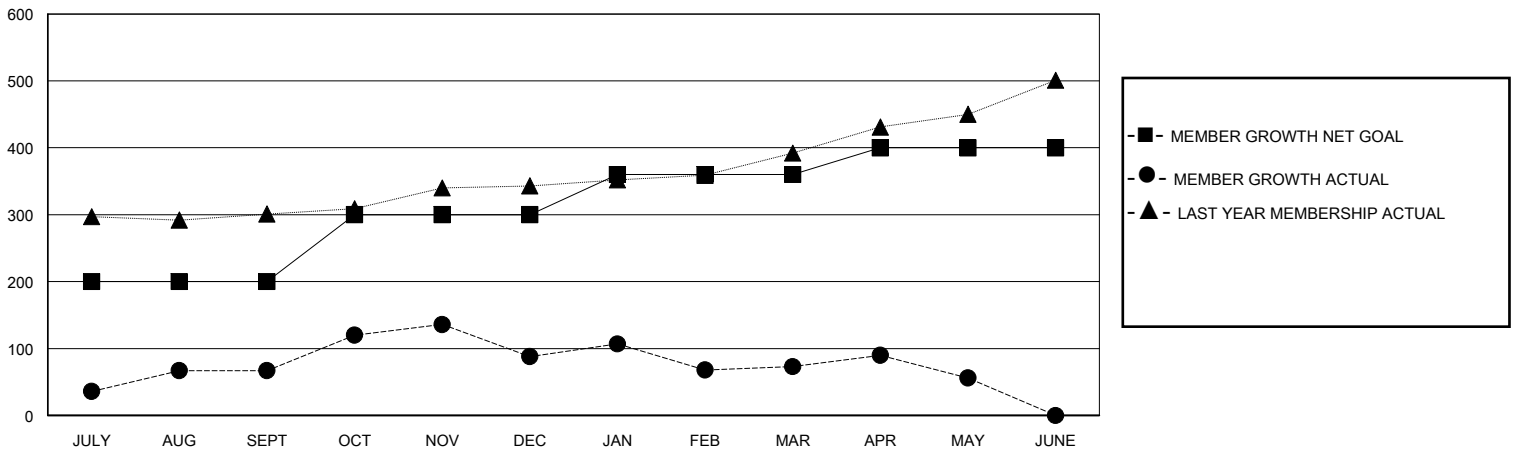
Clubs			
RESULTS FOR 2023-2024			
QUARTER	NEW CLUB GOAL	NEW CLUBS	DROPPED CLUBS
JULY/AUG/SEPT	8	2	2
OCT/NOV/DEC	0	4	4
JAN/FEB/MAR	1	0	1
APR/MAY/JUNE	1	0	0

Members			
RESULTS FOR 2023-2024			
QUARTER	MEMBER GROWTH NET GOAL	MEMBER GROWTH ACTUAL	DROPPED MEMBERS ACTUAL (including transfers)
JULY/AUG/SEPT	200	230	151
OCT/NOV/DEC	100	295	270
JAN/FEB/MAR	60	68	64
APR/MAY/JUNE	40	101	91

GOALS AND ACTUAL NEW CLUBS CUMULATIVE



GOALS AND ACTUAL MEMBERS CUMULATIVE



DROPPED CLUBS: 7	66 CLUBS OF 93 ADDED 1 OR MORE NEW MEMBERS	<u>GENDER DISTRIBUTION</u>	
<u>DROPPED MEMBERS</u>		MALE	2,475 (64.19%)
DECEASED	18	FEMALE	1,381 (35.81%)
CLUB CANCELLED	85	TOTAL FAMILY UNIT MEMBERS 1,856	
OTHER	473		
TOTAL	576	FAMILY MEMBERS PAYING HALF DUES 1,075	

[CLICK HERE FOR CUMULATIVE MEMBERSHIP DATA](#)